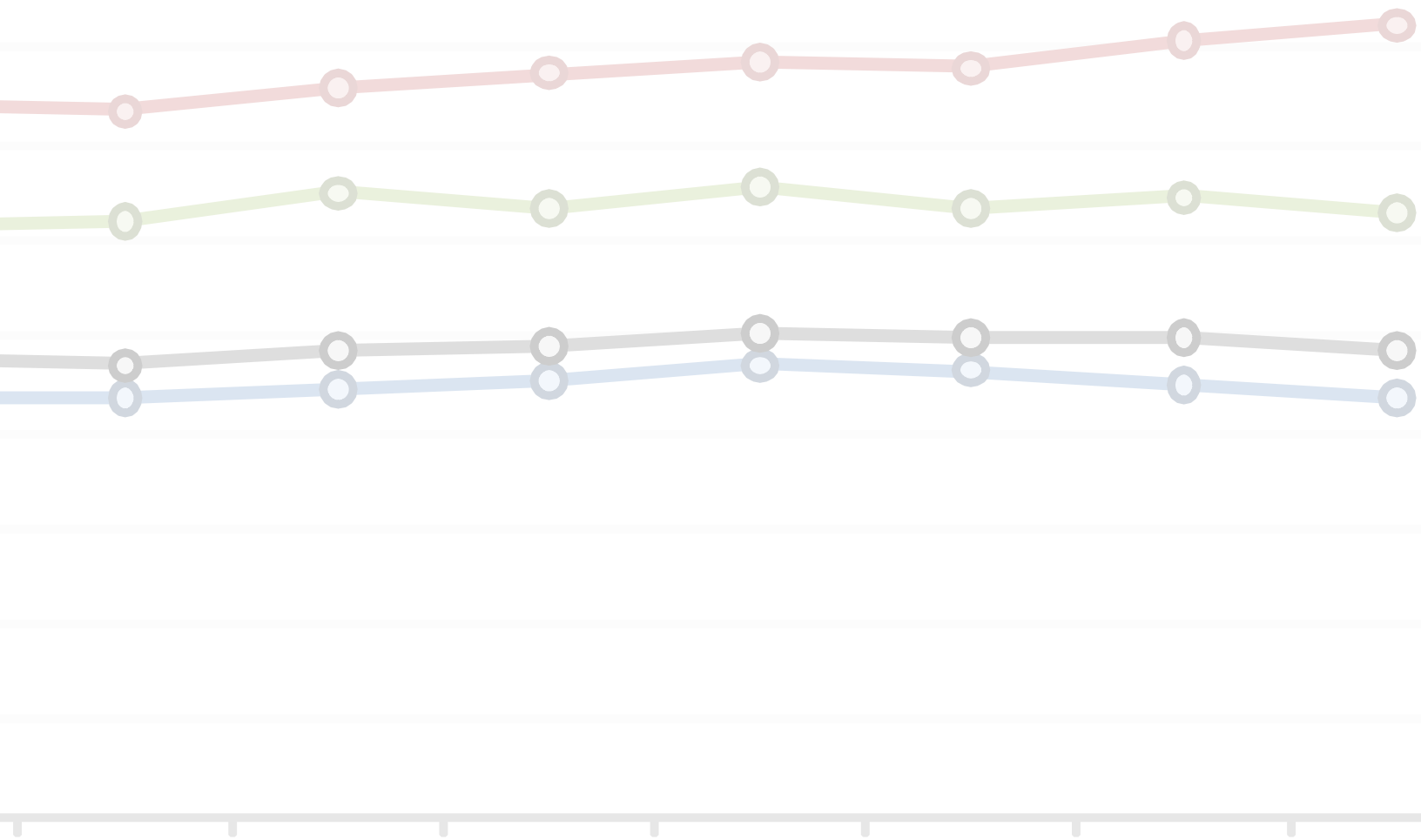




FEBRUARY 2010

RACE-RECOVERY INDEX

IS STIMULUS HELPING COMMUNITIES IN CRISIS?



KIRWAN INSTITUTE

FOR THE STUDY OF RACE AND ETHNICITY

THE OHIO STATE UNIVERSITY

john a. powell
Executive Director

Andrew Grant-Thomas
Deputy Director

STAFF CONTRIBUTORS

Matthew Martin, *GIS/Planning Specialist*

Jason Reece, *Senior Researcher*

Christy Rogers, *Senior Research Associate*



TRACKING THE EQUITY OF OUR RECOVERY

The Race-Recovery Index, a project of the Kirwan Institute, is designed to measure how all people, but particularly marginalized populations, are faring in the midst of the national recovery efforts. The two primary tools for measurement that will be used on a monthly basis will be the national unemployment figures by race, and the Federal contract procurement of the American Recovery and Reinvestment Act of 2009 (ARRA). Additional forms of measurement may eventually be added. As new information becomes available, the Index will be updated accordingly and will include commentary about trends in the findings.

NATIONAL UNEMPLOYMENT

While the recession has impacted virtually every aspect of our nation's economic and social fabric, communities of color have been disproportionately affected, particularly when it comes to employment. For example, between January of 2009 and January of 2010, unemployment among Whites increased 22.3%, while Black and Latino unemployment increased by 28.6% and 30.3% respectively (see *Table 1*).¹

More recent trends show that the White unemployment rate has decreased each month since October of 2009, while the rate for Blacks continued to climb for most of that period (see *Table 2*). A further breakdown (shown in *Chart 3*) reveals that the unemployment rate for Black men (17.6%) is almost twice that of White men (9.1%), and that the unemployment rate for White youth is 23.5%, compared to 37.2% and 43.8% among Latinos and Blacks (see *Chart 4*).²

Table 1. Jan 2009- Jan 2010 Unemployment Totals by Race

Race	Jan-09	Feb-09	Mar-09	Apr-09	May-09	Jun-09	Jul-09	Aug-09	Sep-09	Oct-09	Nov-09	Dec-09	Jan-10	% Change
White	8,815	9,408	9,996	10,213	10,874	10,986	10,927	11,254	11,366	11,813	11,589	11,266	10,782	22.3%
Black	2,278	2,396	2,367	2,676	2,650	2,617	2,600	2,682	2,701	2,754	2,757	2,843	2,929	28.6%
Latino	2,186	2,433	2,571	2,548	2,860	2,739	2,792	2,908	2,849	2,939	2,872	2,891	2,848	30.3%
Total	11,919	12,714	13,310	13,816	14,518	14,721	14,534	14,993	15,159	15,612	15,340	15,267	14,837	24.5%

Source: <ftp://ftp.bls.gov/pub/suppl/empisit.cpseea4.txt>, <http://www.bls.gov/news.release/empisit.nr0.htm>

Table 2. Jan 2009- Jan 2010 Unemployment Rates by Race

Race	Jan-09	Feb-09	Mar-09	Apr-09	May-09	Jun-09	Jul-09	Aug-09	Sep-09	Oct-09	Nov-09	Dec-09	Jan-10
White	7.0	7.5	8.0	8.1	8.6	8.7	8.7	8.9	9.1	9.4	9.3	9.0	8.7
Black	12.8	13.5	13.5	15.0	15.0	14.8	14.7	15.2	15.5	15.7	15.6	16.2	16.5
Latino	9.9	11.0	11.6	11.4	12.7	12.3	12.4	13.0	12.7	13.1	12.7	12.9	12.6
Total	7.7	8.2	8.6	8.9	9.4	9.5	9.4	9.7	9.8	10.1	10	10	9.7

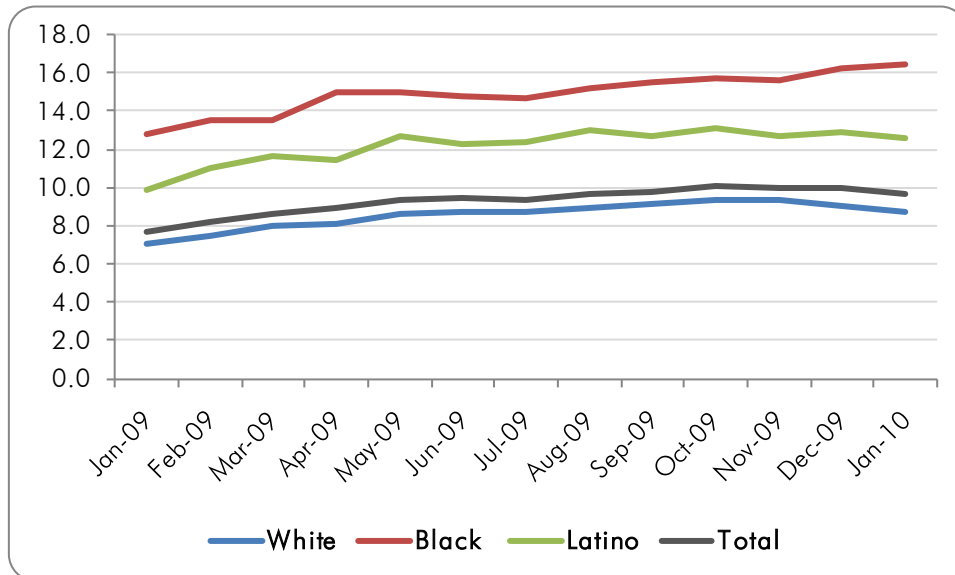
Source: <ftp://ftp.bls.gov/pub/suppl/empisit.cpseea3.txt>, <http://www.bls.gov/news.release/empisit.nr0.htm>

¹ This data, and all employment data contained in this document, came from the U.S. Bureau of Labor Statistics. The most recent update can be found at: <http://www.bls.gov/news.release/empisit.nr0.htm>

² Unemployment data for Latino youth has not yet been seasonally adjusted, while the data for Whites and Blacks has been.

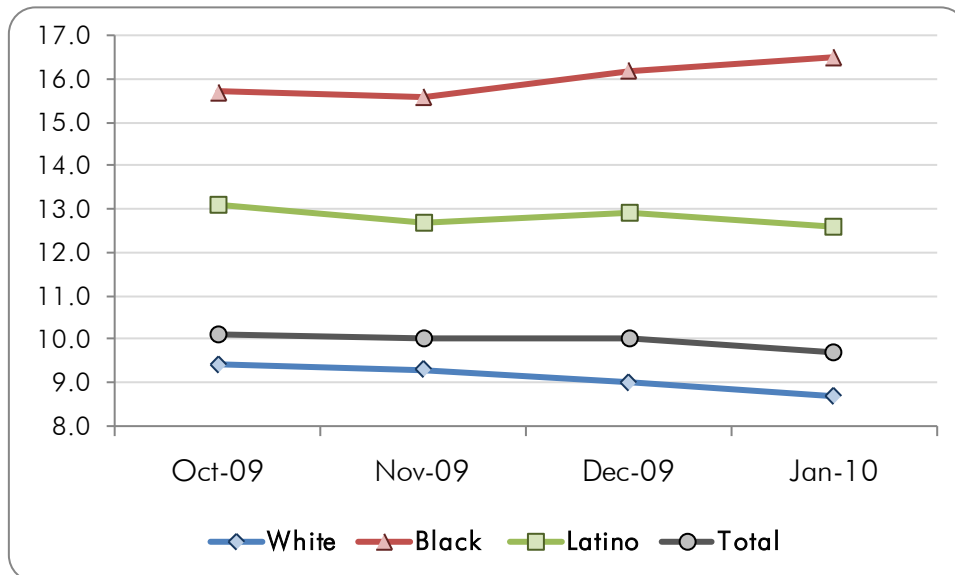


Chart 1. Jan 2009- Jan 2010 Unemployment Rates by Race



Source: U.S. Bureau of Labor Statistics

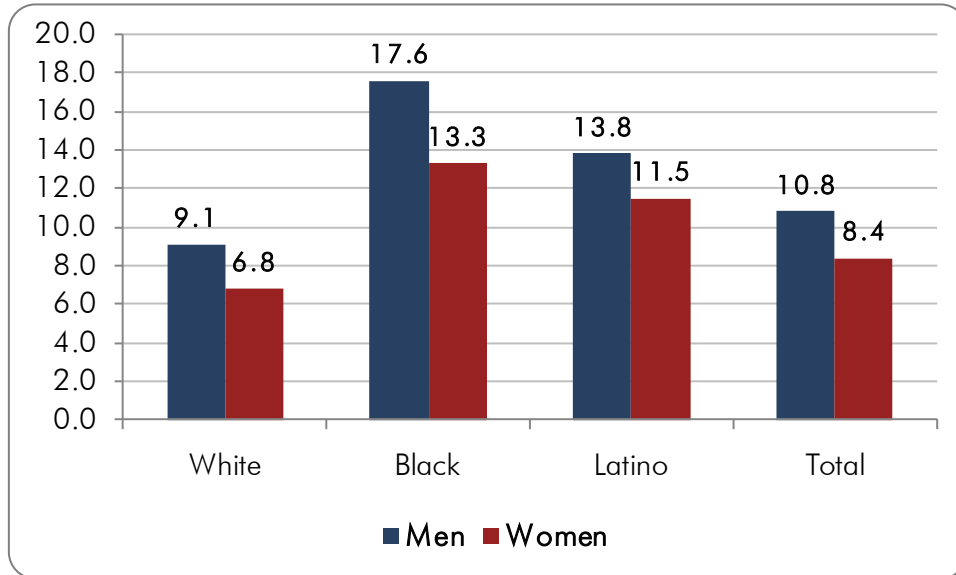
Chart 2. Recent Unemployment Trends, by Race



Source: U.S. Bureau of Labor Statistics

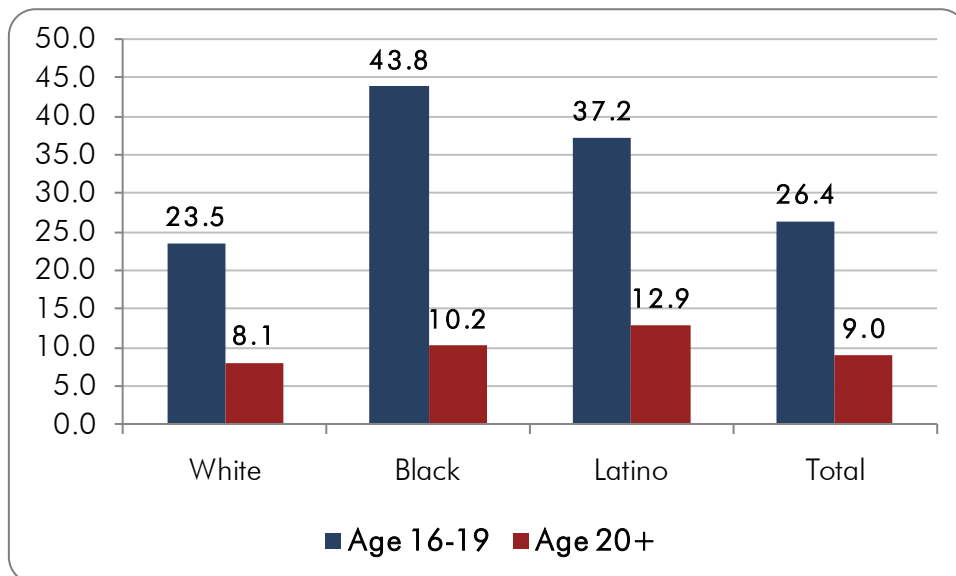


Chart 3. January 2010 Unemployment Rate by Race and Gender



Source: <http://www.bls.gov/news.release/empsit.nr0.htm>

Chart 4. January 2010 Unemployment Rate by Race and Age



Source: <http://www.bls.gov/news.release/empsit.nr0.htm>



FEDERAL ARRA CONTRACT PROCUREMENT

An important way that marginalized communities gain access to employment opportunities is through the contracts that their local businesses are able to procure. One method of determining if people of color have good access to jobs is to identify how non-White-owned firms are faring in the contract procurement process.

An overall look at Federal ARRA contracting reveals noticeable inequality. Despite the fact that Women-owned, Latino-owned, and Black-owned businesses account for 28.2%, 6.8%, and 5.2% of all U.S. businesses respectively,³ as of February 1, 2010 they had only received 2.4%, 1.6%, and 1.1% of the value of Federal ARRA contracts that have been procured (see *Table 3*).⁴ A deeper analysis of contract procurement by Federal agency shows that some departments have been more successful than others at awarding contracts to underrepresented business owners. *Chart 5* shows how the five Federal agencies that have doled out the most funds have done in terms of procurement to businesses owned by Women, Blacks, or Latinos.

Table 3. Federal ARRA Contract Procurement to Underrepresented Businesses

Business Type	Contracts	Amount	% of All Contracts	% of Total \$Amount
Small Business	11,933	\$7,498,160,470	36.2%	16.5%
Total for All Non White Owned	4,721	\$3,409,766,348	14.3%	7.5%
Women Owned	2,655	\$1,100,301,476	8.1%	2.4%
Hispanic Owned	1,232	\$725,105,107	3.7%	1.6%
Black Owned	864	\$496,588,134	2.6%	1.1%
Total for All Federal ARRA Contracts	32,946	\$45,505,971,648		

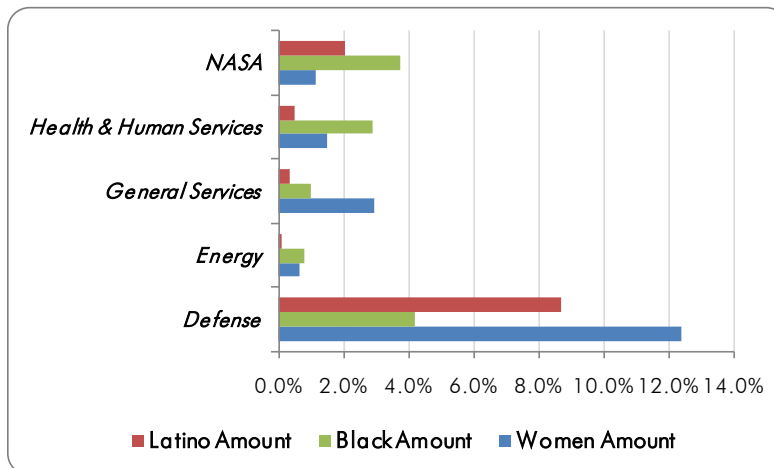
Source: Federal Procurement Data System, Recovery Report, 2/1/2010

³ The source of this data is the Federal Procurement Data System, Recovery Report. www.fpds.gov

⁴ The source of this data is the 2002 U.S. Economic Census, Survey of Businesses.



Chart 5. Share of Federal ARRA Procured Contract Value, by Agency and Race of Business Owner



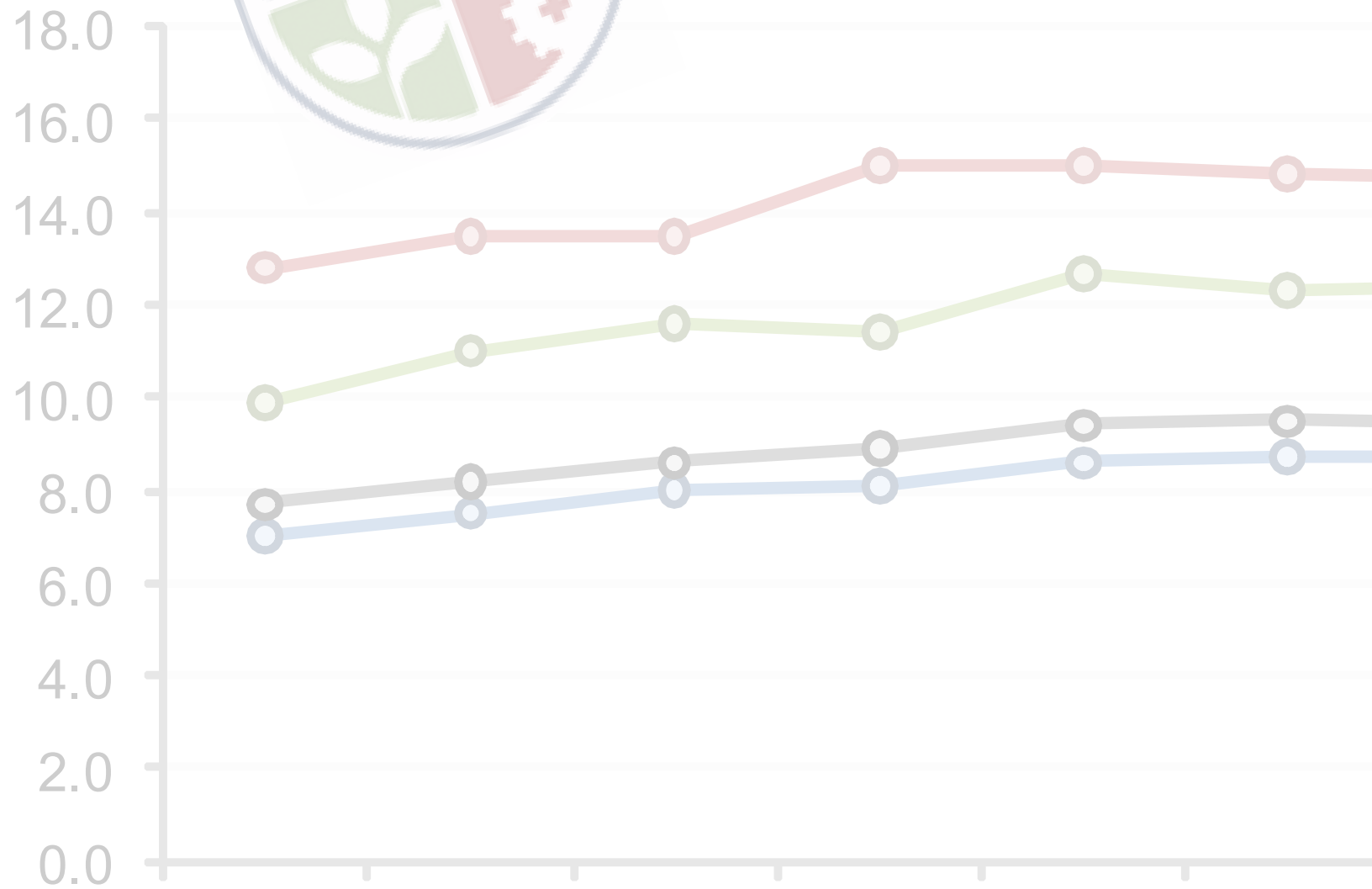
Source: Federal Procurement Data System, Recovery Report, 2/1/2010

.....

KIRWAN INSTITUTE

A university-wide interdisciplinary research institute, the Kirwan Institute generates and supports innovative analyses of the dynamics that underlie racial marginality and undermine full and fair democratic practices in the United States and throughout the global community. Its work informs policies and practices to produce equitable change.

.....



KIRWAN INSTITUTE FOR THE STUDY OF RACE AND ETHNICITY

THE OHIO STATE UNIVERSITY

433 MENDENHALL LABORATORY | 125 SOUTH OVAL MALL | COLUMBUS OH 43210

Ph: 614.688.5429 | Fax: 614.688.5592

Website: www.kirwaninstitute.org